

Having trouble viewing this email? [Click here](#)

# The Mentor

February/2012

Issue: 2

## Director's Letter

Hello Students and Faculty Supporters,

If you followed the February 17th, edition of the IDS you may have read the article "A different kind of Shelter: Interfaith collaboration for community's homeless." The Interfaith Winter Shelter (IWS) is a low barrier shelter for homeless citizens in Monroe County who are in danger of hypothermia during the cold winter months. IWS is a collaboration consisting of faith based organizations in the Bloomington community. The shelter provides an important service for Monroe County's homeless, and is a credit to our community.



On Monday, January 30, the FASE Advisory Board (FAB), along with members of the Faculty and Staff for Student Excellence engaged in a collaboration with one of the IWS host sites, First United Church. This collaboration was made possible through the City of Bloomington's MLK Day Service Grant award program. The grant allowed FAB to embark on a MLK Service Project called "Cover Bloomington." The purpose of the project was to secure warm blankets, socks, and food to for one of the winter shelters to be distributed to our homeless citizens. This project was a huge success. Several FASE students turned out to assist First

## In This Issue

[Black History Month](#)

[What Makes a Great Leader?](#)

[FASE Alumni Reflections](#)

[Mentor of the Month](#)

[Protege of the Month](#)

## Important Dates and Deadlines



[FASE Dinner Symposium](#)

March 1, 2012  
6:30pm-8:00pm

IMU President's Room

[FAFSA Deadline](#)

March 10, 2012 by  
midnight, Central Time

[Spring Recess](#)

March 10, 2012

[Classes Resume](#)

March 19, 2012

[FASE Bowling Event](#)

March 22, 2012  
Back Alley Bowling

United Church and IWS with their mission of serving the homeless. Our students did our university proud on this day. Please join me in thanking those FAB and FASE members who turned out to provide a valuable service to our community.

Thank You to those who participated in Cover Bloomington:

Jenny Aroune  
 Dayana Arellano  
 Linda Hunt (First United Church)  
 Amber Smith  
 Brionna Washington  
 Melissa Utom  
 DeVol Tyson II  
 Christine Bestman  
 Rene Villa  
 Joanie Dawson  
 Alejandro Argüello  
 Emily Manzanares

-Director Patrick Smith

Lane, IMU

Free Week (see Final Examination Policies)  
 April 23, 2012 - April 29, 2012

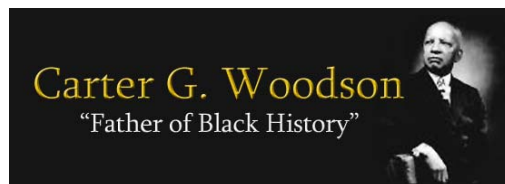
Final examination period  
 April 30, 2012- May 4, 2012

Last day of classes  
 April 28, 2012



[Find us on Facebook](#)

## Black History Month



Before the 1900's it was commonly presumed that the history of African Americans did not exist- other than enslavement. Today, it is clear that blacks have significantly impacted the development of the United States and the World. The founder of Black History Month is Dr. Carter G. Woodson. Woodson was born to slaves in 1915.

He founded the Association for the Study of Negro Life and History, now called the Association for the Study of African American Life and History (ASALH) who to this day continues Woodson's tradition of disseminating information about black life, history and culture to the global community. In 1926 Dr. Woodson launched Negro History Week, chosen in the second week of February between the birthdays of Frederick Douglass and Abraham Lincoln. In 1976, this celebration was expanded to include the entire month of February, and today Black History Month is celebrated throughout the country by people of all ethnic and social

backgrounds.

-Shelia Hall

## What Makes a Great Leader?

What makes great leaders great? Is it because they have an ability to command others into action or is it because they inspire others to move towards a mutual goal? According to Simon Sinek, author of *Start With Why: How Great*



*Leaders Inspire Everyone to Take Action*, there is a pattern in all great and inspiring leaders. Whether it is Martin Luther King or the Wright brothers, they all communicate the same way; by talking and acting in terms of their ultimate purpose and not in terms of what they want. These leaders have been able to revolutionize the way we do function and they have ultimately improved our lives.

To understand what Sinek is trying to stress it is necessary to understand the different ways in which a person can instill desire in others. There are three different ways to do so. The first is by stating the "what" of a purpose for an organization or a business. What do we do as an organization? Take Apple Inc. for example, what do they produce? Computers. Stating the "what" is important in a leader, but stating the "how" of an action is just as important. How does Apple produce computers? By paying special attention to detail and making its operation system simpler than that of competitors. As you might note, there's a slight difference between the "what" message and the "how" message are delivered. Both the "what" message and the "how" message are important for a leader because they are the foundational questions and concepts of a purpose. These ideas are essential for the success of a project.

The final way to instill desire in others is by stating the "why". Apple strives to challenge the status quo and make life easier by making products that are simpler to use. According to Sinek, this last statement delivers much more result and makes people tip over a product. To complement the argument that communicating a purpose delivers greater results is the biology of the human brain. In the words of Sinek, the brain is divided into two parts, the neo-cortex and a limbic system. The neo-cortex is "our homosapiens brain, in charge of all the rational, analytical thought, and language". The limbic system on the other hand, concentrates on "our feelings, it is what

makes us trust others, and be loyal to them." It is also responsible for all human behavior, and decision making. Unlike the neo-cortex, the limbic system is unable to understand language, reason being communicating in terms of the "why" delivers greater results. Talking in terms of our purpose ignites a greater response in the limbic system as the message carries a feeling, and not just plain language, like a "what" statement would. By conveying a purpose into our actions and the way in which we communicate them, we can ignite a greater response on others.



As a result better outcomes can be achieved if there is a greater understanding and agreement between parties involved. Therefore, think twice when you want to inspire others to take action. You might just get a better result if you do so in terms of the "what, how, and, why". To check Sinek talk on the matter go to check out his website at:

[www.startwithwhy.com](http://www.startwithwhy.com)

-Alejandro Argüello

## FASE Alumni Reflections What's Up With...

### Julian R. Edwards

Since I graduated from Indiana University Bloomington, I have been working at the Edna Martin Christian Center in Indianapolis, Indiana. In my position as a Youth Program assistant,

I work with children from grades kindergarten to sixth, who resides on the east side of Indianapolis. We provide services ranging from afterschool tutoring and mentoring to ISTEP testing preparation. It is really a joy to work with these children because we are investing in their future. We want them to be prepared for the future in every aspect of their lives and it is a opportunity for me to make a positive impact on their lives. One piece of advice that I would give you is, make sure that you constantly and



effectively network with different people and employers because they will be able to provide you opportunities such as internships and jobs. Maintaining communication with different people in your desired profession will ensure that you have better chances in getting a good job once you get out of college. It was through networking with an organization here in Indianapolis, that I was fortunate to gain this opportunity to work at the Edna Martin Christian Center. Furthermore, when you are pursuing your dreams, you will come against some challenges. Don't view these challenges as hindrances, instead use those experiences as a learning point to grow and develop. In the end, it will make you a stronger and better person that will be able to compete and achieve! FASE is an excellent program that will give you great tools to achieve so stay connected with your mentors. God bless you and have a great year!

-Julian R. Edwards

## Mentor of the Month

### Melissa Utomo

February's Mentor of the Month is Melissa Utomo. Melissa is a junior here at Indiana University majoring in Information Process Management through the prestigious Kelley School of Business. Melissa has always shown great leadership and accountability throughout her years in the F.A.S.E. program. Melissa created F.A.S.E. Business Etiquette program and is currently creating the upcoming Dinner Symposium with Mr. Smith. This year her efforts has been especially recognized and appreciated in the development of the M.A.P. program. The Mentor Apprenticeship Program (M.A.P.) is targeted towards students involved in F.A.S.E. The students get the opportunity to extensively plan events for the Office of Mentoring Services and Leadership Development. In addition to being a mentor, Melissa is involved in Serve IT, a non-profit clinic found in the Informatics School, and Shalom Community Center a homeless shelter that actively helps by volunteering and cooking breakfast for guests. Melissa is a model mentor and a great leader, and F.A.S.E. is proud to name her February's Mentor of the Month.



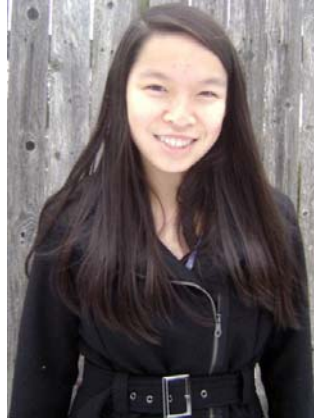
-Christine Bestman

## Protege of the Month

### Jenny Aroune

Jenny Aroune is a freshman from

Rochester, Indiana majoring in biology. After hearing about the FASE mentoring program as a 21st century scholar, Jenny decided to give it a try and see what mentoring was all about. Through the program, Jenny was able to make the transition from high school to college a smooth process. Part of which was due to her ability to understand the importance of immersing into what IU has to offer. By joining different clubs in campus, and taking part in different activities, Jenny has been able to meet new people and learn from this new environment. After her first semester as a freshman, Jenny was also able to successfully cope with a heavy load of 17 credits and obtain a good academic standing. This coming year she will be preparing to take on a new challenge and start life as an independent student living in her own apartment with two other roommates away from campus.



-Alejandro Argüello

Patrick D. Smith  
Director  
Eigenmann Hall, Room 619  
1900 East 10th Street  
Bloomington, Indiana 47406-7511  
Phone: 812.855.3540  
Email: smithpd@indiana.edu

[Forward this email](#)



This email was sent to omsld@indiana.edu by [omsld@indiana.edu](mailto:omsld@indiana.edu) |  
[Update Profile/Email Address](#) | Instant removal with [SafeUnsubscribe™](#) | [Privacy Policy](#).



Try it FREE today.

Indiana University - OMSLD | 1900 E. 10th St. | Room 619 | Eigenmann Hall | Bloomington | IN | 47406